



e.janach[®]

RETINAL INSTRUMENTS

Made in Italy



صوفيا تيب
سهامي خاص



Lieberman

J 2031

Adjustable speculum,
14 mm long, V-shaped blade



Campos

J 3270



Tying and stitch forceps,
straight, with 7 mm tying platform
Recommended for 6-0 to 8-0 sutures



Janach

J 3088



Fixation forceps,
1 x 2 straight, 0.70 mm teeth



Troutman

J 3277



Tying and stitch forceps,
with delicate 6 mm tying platform, straight
Recommended for 8-0 to 10-0 sutures

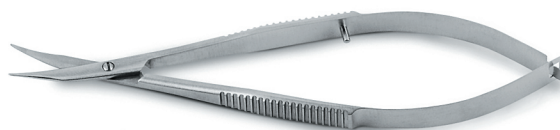


Janach

J 3360



Dressing forceps, strong, straight,
1.20 mm, serrated jaws



Westcott

J 1542



Conjunctival scissors,
curved, 10 mm long blades, blunt tips



Janach

J 4195



Needle holder, curved, without lock,
with delicate jaws, overall length: 120 mm
Recommended for 8-0 to 10-0 sutures



Castroviejo

J 4065



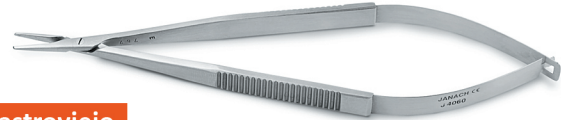
Needle holder, strong,
curved, **with lock**, overall length: 145 mm
Recommended for 4-0 to 7-0



Janach
J 4198



SnagFree Twister needle holder,
curved, without lock,
overall length: 120 mm, **titanium**
Recommended for 8-0 to 10-0



Castroviejo
J 4060



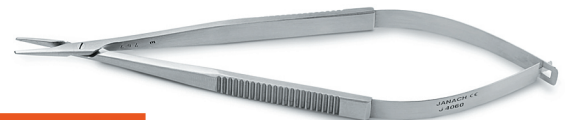
Needle holder,
straight, without lock, overall length: 145 mm
Recommended for 4-0 to 7-0 sutures



Janach
J 2158



Superior muscle hook,
curved, with **hole** on distal point



Castroviejo
J 4061



Needle holder, overall length: 145 mm
curved, without lock
Recommended for 4-0 to 7-0 sutures



Janach
J 3252



Forceps for insertion and removal of plugs,
cross-action

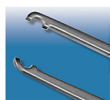


Janach
J 2820.4

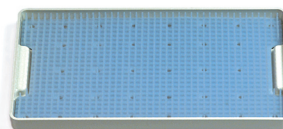
Caliper, straight, 20 mm spread,
graduated scale with 0.5 mm step



Janach
J 3724



23 G loading/removal forceps
for trocar



Janach
J 4711

PSU sterilisation tray,
with silicone mat and **metal clips**,
fits 10 instruments,
outer dimensions: 28.3 x 17.5 x 2.5 cm





Janach
J 4805.5

HRI WideView lens, - 116D



Janach
J 4802

Biconcave AFX lens, quartz, -145D



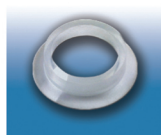
Janach
J 4808

50° Prism lens, quartz, - 60D



Janach
J 4805

Flat lens, quartz, - 60D



Janach
J 4801.1

Silicone ring, reusable



Janach
J 4806

20° Flat lens, quartz, - 60D



Janach
J 2092

Stainless steel ring for lens,
with two arms



Janach
J 4807

30° Prism lens, quartz, - 60D



Bonn
J 2074

Retractor spatula,
angled, 16 mm long



Arpa
J 4488.3

Double-ended scleral depressor,
with sandblasted tips



Schirru
J 2075

Retractor for retinal detachment,
120° angled



Janach
J 4488

Scleral depressor



Janach ②
J 3781
 20 G spare needle, silicone tip,
 5 sterile pieces/box, **disposable**

Janach
J 3781.23
 23 G spare needle, silicone tip,
 5 sterile pieces/box, **disposable**

Janach
J 3781.25
 25 G spare needle, silicone tip,
 5 sterile pieces/box, **disposable**

Janach ②
J 3785
 20 G spare needle, blunt tip,
 5 sterile pieces/box, **disposable**

Janach
J 3785.23
 23 G spare needle, blunt tip,
 5 sterile pieces/box, **disposable**

Janach
J 3785.25
 25 G spare needle, blunt tip,
 5 sterile pieces/box, **disposable**

Janach ②
J 3783
 20 G spare **brush** needle, silicone tip,
 5 sterile pieces/box, **disposable**

Janach
J 3783.23
 23 G spare **brush** needle, silicone tip,
 5 sterile pieces/box, **disposable**

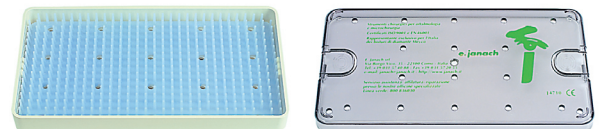
Janach
J 3783.25
 25 G spare **brush** needle, silicone tip,
 5 sterile pieces/box, **disposable**



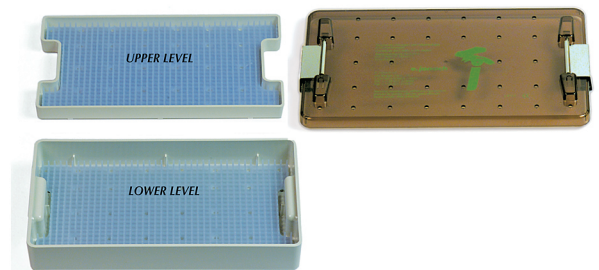
Janach
J 3780
 Passive aspirating backflush,
blue titanium handle



Janach
J 3780.1
 Passive aspirating backflush,
violet titanium handle
 (for better identification using different tips)



Janach
J 4710
 PSU sterilisation tray, with silicone mat,
 fits 5-7 instruments,
 outer dimensions: 19.9 x 11 x 2.5 cm



Janach
J 4721
 PSU sterilization tray, with silicone mat and
 metal clips, two tiered, fits 20 instruments,
 outer dimensions: 28.3 x 17.5 x 4.5 cm





Janach
J 3870.23



23 G vitreous scissors, lightly curved jaws



Janach
J 3838.23



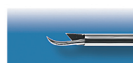
23 G retinal forceps, delicate end gripping

Janach
J 3843.23



23 G vitreous scissors, 45° vertical cutting action

Janach
J 3843.25



25 G vitreous scissors, 45° vertical cutting action

B. Corcóstegui
J 3835.23



23 G asymmetrical forceps for epiretinal membranes and ILM, slightly curved tips with wide and secure gripping

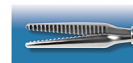


Janach
J 3834.23



23 G ILM forceps (based on Eckardt design)

Janach
J 3839.25



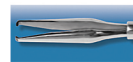
25 G retinal forceps, straight, serrated jaws

Mariotti
J 3834.1.23



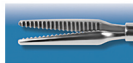
23 G ILM forceps, angled grasping tips

Janach
J 3834.25



25 G ILM forceps, (based on Eckardt design)

Janach
J 3839.23



23 G retinal forceps, straight, serrated jaws

Tano
J 3827.25



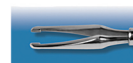
25 G ILM forceps

Tano
J 3827.23



23 G ILM and macular forceps

Zenoni
J 3838.25



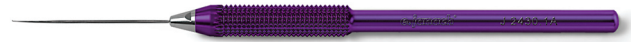
25 G retinal forceps, delicate end gripping



Janach
J 3840.25



25 G vitreous scissors, lightly curved jaws



Zenoni
J 2437.23A



23 G membrane pick, pointed tip,
for trocar, 160° angled

Mariotti
J 3834.1.25

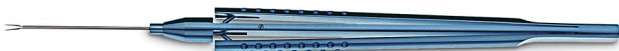


25 G ILM forceps, angled, grasping tips

DeMolfetta-Zenoni
J 2437.1A



20 G membrane pick, angled, sharp tip



Janach
J 3834



20 G ILM forceps, **titanium** handle (based on Eckardt design)

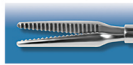


Janach
J 3846



20 G vitreous scissors, long jaws with 70° vertical
cutting action, **titanium** handle (designed by Schirru M.D.)

Janach
J 3839



20 G retinal forceps, straight, serrated jaws,
titanium handle

Janach
J 3840



20 G vitreous scissors, lightly curved jaws, horizontal cut,
titanium handle

Janach
J 3844



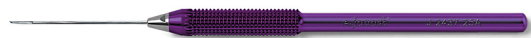
20 G vitreous scissors, 90° vertical cutting action,
titanium handle



Janach
J 3865



20 G three-pronged foreign body
endovitreous grasper, reverse-action, **titanium** handle



Zenoni
J 2437.25A

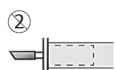


26 G membrane pick, pointed tip, for trocar,
160° angled





Janach
M 5116



20 G, self-retaining, sutureless, 4.0 mm
Fluid infusion cannula,
5 sterile pieces/box, **disposable**



Janach
M 5117



20 G Silicone oil infusion cannula, self-retaining, sutureless, 4.0 mm,
5 sterile pieces/box, **disposable**



Janach
J 4970

Scleral plugs set:
2 plugs **20 G,**
2 plugs **19 G,**
5 sterile sets/box, **disposable** ②



Retinal IMPLANTS



صوفیاتب